

Courses down the Creek

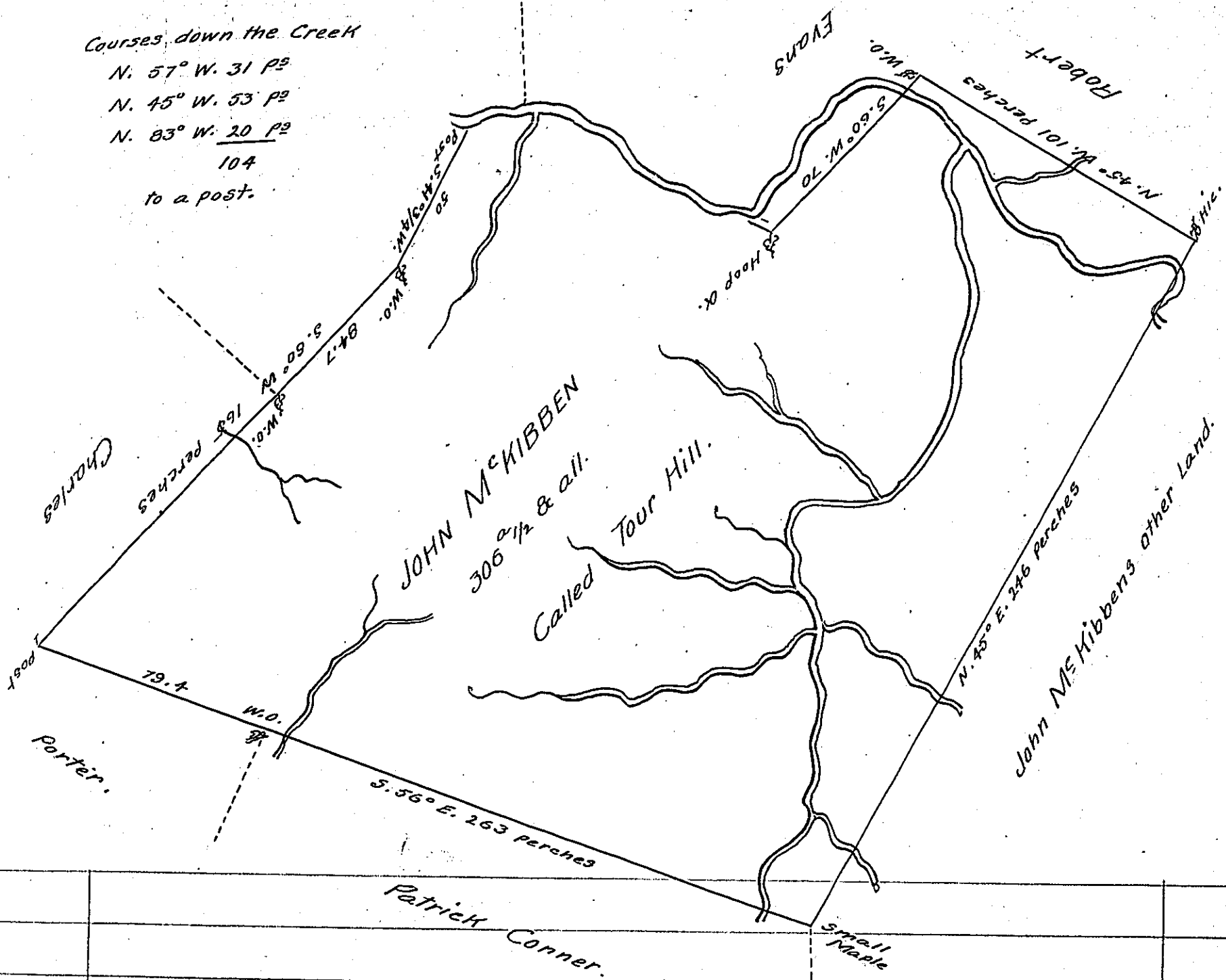
N. 57° W. 31 P^s

N. 45° W. 53 P^s

N. 83° W. 20 P^s

104

to a post.



Situated on Dunlaaps Creek in Manallen Township
 Fayette County and Survey'd the 12th day of December 1783, in
 pursuance of a Warrant dated the 4th day of June 1772.

P^s Alexander McClean Dep^y

To John Luthens Esq^r

Surveyor General.

IN TESTIMONY that the above is a copy of the original remaining on file in
 the Department of Internal Affairs of Pennsylvania, made
 conformably to an Act of Assembly approved the 16th day of
 February, 1833, I have hereunto set my Hand and caused
 the Seal of said Department to be affixed at Harrisburg,
 this.....Seventh.....day of.....December.....1905.

Joseph R. Hoover
 Secretary of Internal Affairs.